

4
DRAWING MADE IN THIRD ANGLE PROJECTION

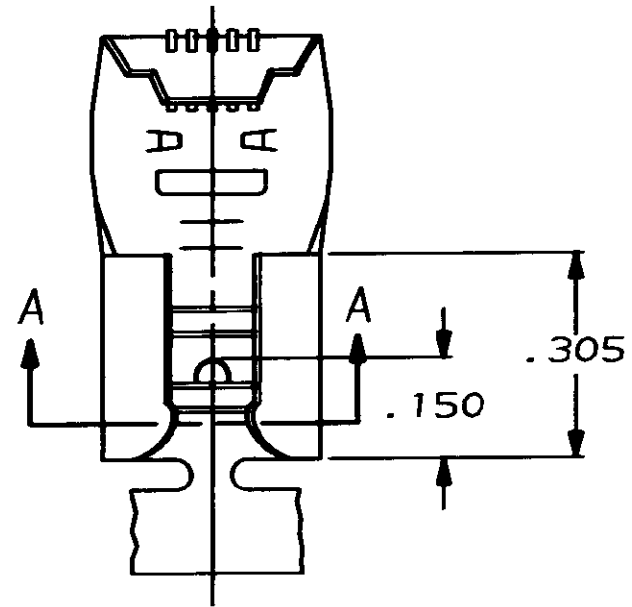
3

2

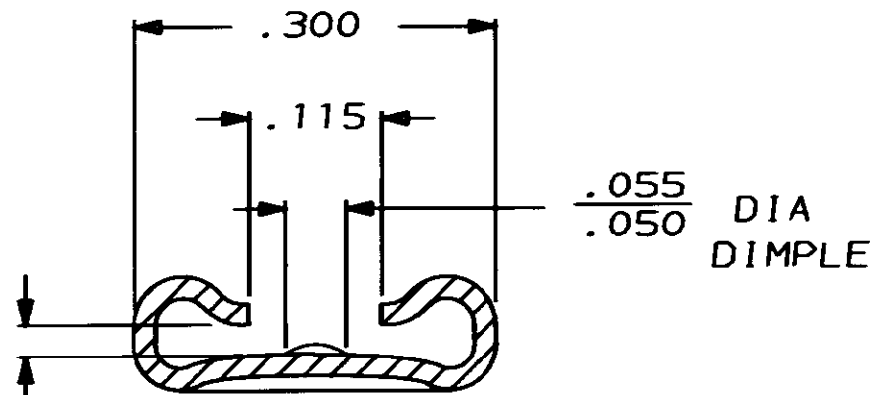
1

THIS DRAWING IS UNPUBLISHED. RELEASED FOR PUBLICATION _____, 19 ____
 © COPYRIGHT 1972 BY AMP INCORPORATED, HARRISBURG, PA. ALL INTERNATIONAL RIGHTS RESERVED. AMP PRODUCTS MAY BE COVERED BY U.S. AND FOREIGN PATENTS AND/OR PATENTS PENDING.

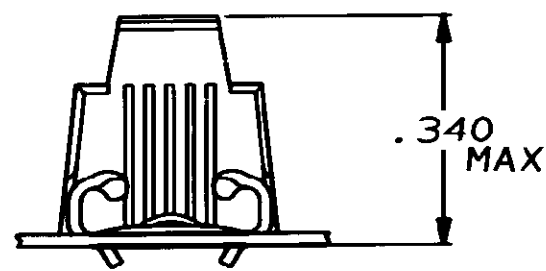
LOC	DIST	REVISIONS				
P	F	ZONE	LTR	DESCRIPTION	DATE	APPROVED
AF	50			E REVISED AF-7660	10/18/91	JR



1- CONTINUOUS STRIP ON REELS.



FITS .250 SERIES FASTON TAB
SECTION A-A



18-12 OR (2) #16	.032 ±.001	PRE-TIN	.016 4M BRASS	62091-2
18-12 OR (2) #16	.032 ±.001	---	.016 4M BRASS	62091-1
WIRE SIZE	TAB THK	FINISH	MATERIAL	PART NO

UNLESS OTHERWISE SPECIFIED DIMENSIONS ARE IN INCHES TOLERANCES ON: 2 PL DEC ± _____ 3 PL DEC ± .015 ANGLES ± _____	DR <i>JR Ratto</i> 2-3-86
	CHK _____
	APPD _____
	APPD _____
MATERIAL SEE TABLE	PRODUCT SPEC _____
FINISH SEE TABLE	APPLICATION SPEC _____
	WEIGHT _____

AMP INCORPORATED Harrisburg, Pa. 17105		
NAME .250 SERIES FLAG FASTON RECEPTACLE		
SIZE B	FSCM NO 00779	DRAWING NO 62091
SCALE NTS	SHEET 1 OF 1	